



51-22129
Instructions for Installation
Upper Soft Doors for Polaris RZR XP 1000 Crew

Notice: Do not smoke inside the cab or expose the enclosure to direct flames. Cab is Flammable.

Be sure to read these instructions thoroughly before opening and installing the enclosure.

The installation is best done when the temperature is 70 degrees F° or warmer.

The temperature affects the adhesive Velcro, if conditions prevent installing in warmer weather it helps to store the adhesive Velcro at room temperature prior to installation.

General Preparation

1. Carefully open the carton and remove the enclosure on a large flat surface that is clean and free of dirt.
2. Check over the parts included in the carton with the parts list shown below:

Contents	QTY
Passenger Front Door	1 each
Driver Front Door	1 each
Passenger Rear Door	1 each
Drive Rear Door	1 each
Button Snaps	26 each
Adhesive Velcro Hook Strips	1 x 560"

If any parts are damaged or missing, please contact customer service at 1-800-213-7981



Prepping the Machine

Before installing the soft enclosures, remove the roof, front and rear windshield, and any other components that may obstruct installation. Thoroughly clean the cage with mild soap / water and allow to dry completely.



Installation of Soft Doors

3. Begin by adding Velcro onto the roll cage and plastic paneling in the locations indicated in yellow below, and apply to both sides. You may also need to trim Velcro on the A-pillar depending on windshield clamps and mirror locations.



Front A-Pillar



Front Side Plastics



Front Driver Door



Top of ROPs



Rear Driver Door



Rear Plastic and ROPs



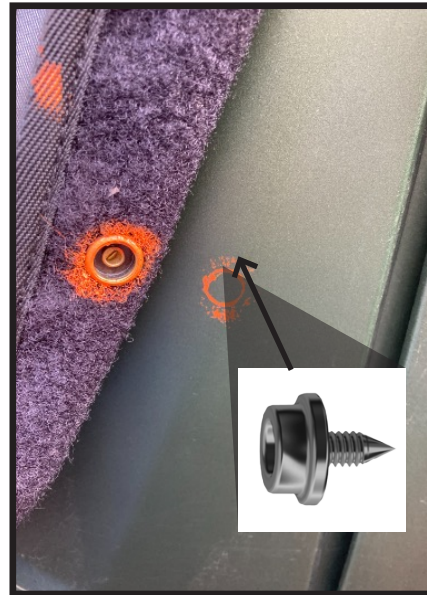
4. Once you are happy with the velcro, align the Rear door to the top of the cage and then align the rest of the outer door to match the profile of the cage. Firmly press door to velcro on the cage. Adjust fitment if needed. Repeat this set on the opposite side.



5. Next repeat the process with the Front doors. Align the edge of the door to the A-pillar and follow the profile of the cage. Firmly press door to velcro on the cage. Adjust fitment if needed. Repeat this step on the opposite side.



6. Using the snaps are optional. For best results Outline Snap with a paint marker or chalk, press the snap onto the body to mark location. Install the provided snap and secure the soft door to the snaps. Repeat for all remaining snaps.



7. Reinstall the roof, front and rear windshields, along with anything else that was taken off to install the soft enclosures

INSTALLATION COMPLETE



Cleaning and Storage Recommendations

1. Before removing the Cab for storage, make sure it is very clean in order to prevent scratching of the window panels. Clean with a soft rag or sponge using a mild liquid detergent soap and warm water solution. Never rub the windows with a dry cloth or rag! Let the Cab dry thoroughly before attempting to roll for storage.
2. It is important that the Cab be rolled up for storage rather than folding. Folding will cause damage to the windows!!! Carefully roll up the Cab similar to the way it was when it was packed at the factory. On a large, clean and flat surface, fold the doors over the rear panel first, then, interleave the top and windshield on top of the doors. Begin rolling the Cab into a roll approximately 8 inches in diameter. Put the rolled Cab back into the carton for storage at a normal room temperature. It is best not to expose the Cab to either extreme hot or cold temperatures when storing.

Thank you for your purchase!



Warranty

To The Owner of this Product:

Thank you for purchasing one of our Falcon Ridge Cab Enclosures, Tops &/or Windshields! Below are the terms under which your product is covered under our manufacturer's warranty.

30 Day Warranty which includes and is not limited to replacing the enclosure, tops and/or windshield due to defect of the product. Please refer to the return policy in this case for more information.

1 Year Warranty includes any defect in material or workmanship within this time frame we will gladly correct the problem or replace the enclosure, tops &/or windshield. Upon submitting for the correction or replacement we will need to receive pictures of the defect in material or workmanship along with the receipt from the date of purchase.



WARNING: This product contains a chemical known to the State of California to cause cancer. For more information, go to www.P65Warnings.ca.gov.



FALCON RIDGE

